

# Ringwood Avenue Redhill Surrey

£530,000



RALPH JAMES

# FLOOR PLANS



**Ground Floor**

Ringwood Avenue, Redhill  
Total Area: 92.7 m<sup>2</sup> ... 998 ft<sup>2</sup>  
FOR ILLUSTRATIVE PURPOSES ONLY.



Whilst every attempt has been made to ensure the accuracy of the floor plan shown, all measurements, positioning, fixtures, features, fittings and any other data shown are an approximate interpretation for illustrative purposes only and are not to scale.

No responsibility is taken for any error, omission, miss-statement or use of data shown.

The above statement applies to both 'Still Moving London LTD' and the Company or individual displaying this floor plan.

Unauthorised reproduction prohibited.

© Still Moving London LTD (www.stillmoving.london)

RALPH JAMES



## IN A NUTSHELL



Private garden



Three generous double bedrooms



Spacious luxury living room



Modern family bathroom & downstairs W/C



Sleek and stylish kitchen/dining room



Driveway & Street parking





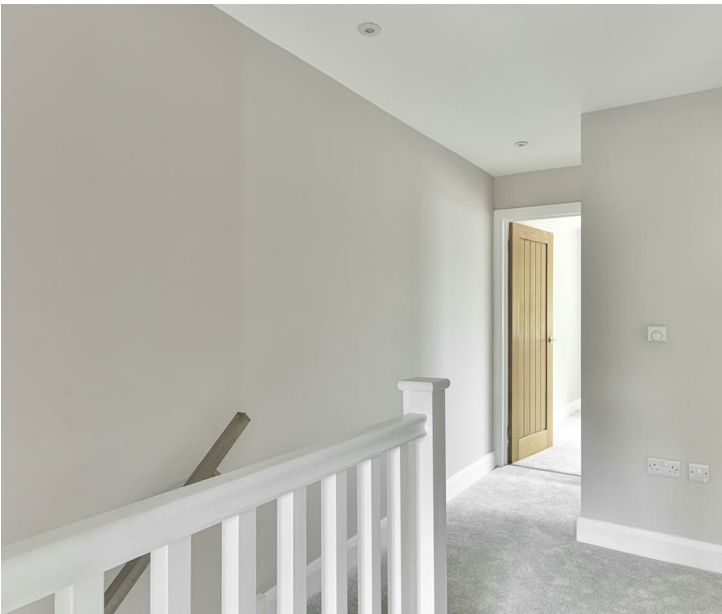
# WHAT'S GREAT?

## HELP TO BUY AVAILABLE

Beautifully finished, these brand new modern and sleek three bedroom semi-detached family homes are ready move into. Situated on a popular road, just outside the main bustle of Redhill which is currently going through a very lavish revamp, having millions of pounds poured into it with new high street stores and a new cinema duplex coming soon. The mainline station can have you into the City in under 40 minutes and the area boasts of great schools, all within walking distance.

The large driveway has enough room for two cars, and there is street parking for any visitors stopping by. Entering the spacious hallway, to your left is the kitchen/dining area with its stylish soft close grey gloss cupboards with built in utilities and enough space for a dining table & chair set. Along the hallway you've got some additional storage space, the downstairs WC and through to the back of the property is the living room. This is a great entertaining space with plenty of room for a luxury sofa set. The bi-folding doors open up giving access to the garden, the patio is ideal for a BBQ and furniture set. The property also comes with a shed where to store a lawn mower and any garden games!

Upstairs you've three generously sized double bedrooms, the large windows lets in natural light and the neutral décor allows you to add your own personal touch with ease. The family bathroom is spacious, a large bath with overhead shower has been finished with a grey tiled wall, making cleaning easy. Storage allows you to keep things neat and tidy, and the stylish illuminated mirror provides a relaxing low light for when you're chilling in the tub after a long hard day.



Ashley likes it  
because....

"There are so many great features to this property, the location is deal with great schools, Redhill town and station within walking distance, and during the warmer months you have a selection of beautiful walks! It's ready to move into, and it's fresh modern design is suitable for any buyer."

## SELLER'S SECRET

## CLOSE TO HOME

St Bedes School 0.9m

Limetree Primary 0.6m

Merstham Station 1.2m

Gatton Park 1.7m

Redhill Station 1.1m

Redhill Station 1.0m

Reigate Town 2.2m

Gatwick 7.8m

To buy or not to buy...

RALPH JAMES



39 High Street | Redhill | RH1 1RX | 01737 765555  
admin@ralphjames.co.uk | www.ralphjames.co.uk

